

2006 TUCSON

GL STANDARD FEATURES INCLUDE:



- 2.0-LITER, 16-VALVE, DOHC 4-CYLINDER ENGINE WITH CONTINUOUSLY VARIABLE VALVE TIMING
- 5-SPEED MANUAL TRANSMISSION
- 4-WHEEL INDEPENDENT SUSPENSION
- ELECTRONIC STABILITY CONTROL (ESC) WITH TRACTION CONTROL SYSTEM (TCS)
- 4-WHEEL ANTI-LOCK BRAKING SYSTEM (ABS)
- 16-INCH, 5-SPOKE ALLOY WHEELS WITH P215/65R TIRES
- REMOTE KEYLESS ENTRY SYSTEM WITH ALARM
- ADVANCED DUAL FRONT AIRBAGS
- FRONT SEAT-MOUNTED SIDE-IMPACT AIRBAGS
- FRONT AND REAR ROOF-MOUNTED SIDE-CURTAIN AIRBAGS
- TILT STEERING COLUMN
- AIR CONDITIONING
- 8-WAY ADJUSTABLE DRIVER SEAT WITH ADJUSTABLE LUMBAR SUPPORT
- 4-WAY ADJUSTABLE FOLD-FLAT FRONT PASSENGER SEAT
- AM/FM/CD AUDIO SYSTEM WITH SIX SPEAKERS
- REAR PRIVACY GLASS
- POWER WINDOWS, DOOR LOCKS, HEATED SIDE MIRRORS
- 60/40 SPLIT FOLD-FLAT REAR SEATBACK
- VARIABLE INTERMITTENT WINDSHIELD WIPERS AND REAR INTERMITTENT WIPER/WASHER
- ROOF SIDE RAILS

GLS INCLUDES ALL STANDARD GL FEATURES PLUS:



- 2.7-LITER, 24-VALVE, DOHC V6 ENGINE
- 4-SPEED AUTOMATIC TRANSMISSION WITH SHIFTRONIC®
- 16-INCH, 5-DOUBLE-SPOKE ALLOY WHEELS WITH P235/60R TIRES
- TIRE PRESSURE MONITORING SYSTEM (TPMS)
- FRONT FOG LIGHTS
- WINDSHIELD WIPER DEICER
- AM/FM/CD/CASSETTE/MP3 AUDIO SYSTEM WITH SIX SPEAKERS
- LEATHER-WRAPPED STEERING WHEEL AND SHIFTER
- MULTI-FUNCTION TRIP COMPUTER
- METALGRAIN INTERIOR TRIM
- ILLUMINATED IGNITION SURROUND
- DOOR COURTESY LIGHTS
- ILLUMINATED VANITY MIRRORS
- REAR RETRACTABLE CARGO COVER
- REAR CARGO NET
- BODYCOLOR DOOR HANDLES AND SIDE MIRRORS
- LOWER BODYSIDE CLADDING
- REAR CHROME ACCENT
- CHROME-TIPPED DUAL EXHAUST

LIMITED INCLUDES ALL STANDARD GLS FEATURES PLUS:



- MONOCHROMATIC EXTERIOR COLOR SCHEME
- LEATHER SEATING SURFACES
- HEATED FRONT SEATS
- AM/FM/CASSETTE AUDIO SYSTEM WITH 6-DISC IN-DASH CD CHANGER, SIX SPEAKERS, SUBWOOFER AND EQUALIZER
- AUTOMATIC TEMPERATURE CONTROL WITH OUTSIDE TEMPERATURE DISPLAY AND AIR QUALITY SYSTEM (AQS)
- ELECTROCHROMIC AUTO-DIMMING REARVIEW MIRROR WITH COMPASS

OPTIONAL EQUIPMENT

You should always use genuine Hyundai parts and accessories, which meet strict standards for quality and durability.



Sunroof

The power tilt-and-slide sunroof invites a healthy dose of fresh air into the cabin and brightens the interior with natural light.



Mud Guards

Front and rear mud guards help keep your Tucson clean, while also protecting your paint's finish from loose road debris.

EXTERIOR COLORS



ALPINE FROST
BEIGE OR GRAY
INTERIOR



MESA RED*
BEIGE OR GRAY
INTERIOR



NORDIC WHITE*
BEIGE OR GRAY
INTERIOR



SAHARA SILVER
BEIGE OR GRAY
INTERIOR



NAUTICAL BLUE*
BEIGE OR GRAY
INTERIOR



OBSIDIAN BLACK
BEIGE OR GRAY
INTERIOR



DESERT SAGE
BEIGE INTERIOR

*GL and GLS only

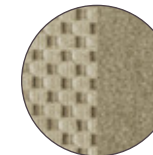
INTERIOR COLORS



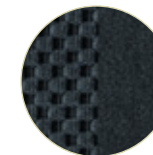
GL BEIGE CLOTH



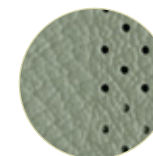
GL GRAY CLOTH



GLS DELUXE
BEIGE CLOTH



GLS DELUXE
GRAY CLOTH



LIMITED BEIGE
LEATHER



LIMITED GRAY
LEATHER